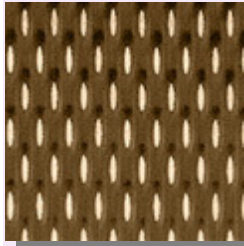
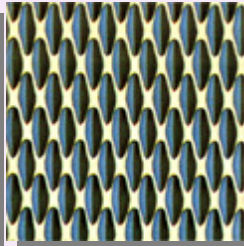


## COLOURTEX™ PATTERNS

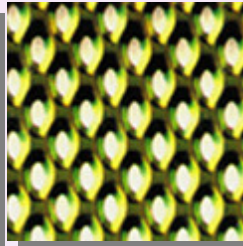
**AUSTRALIAN MADE**  
Delivery approx. 10 - 15 working days



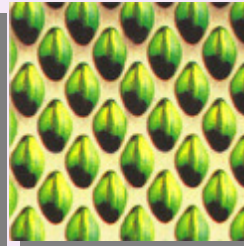
**Pippin**



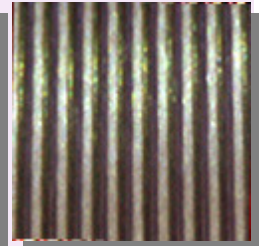
**Prism**



**Pagoda**

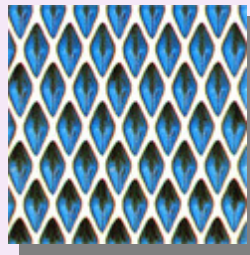


**Pearl**



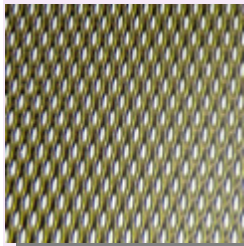
**Pinstripe**

**EX STOCK**  
Delivery approx. 2 - 3 days

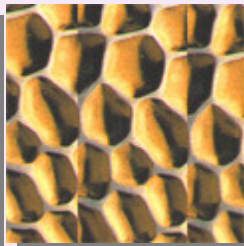


**Pyramid**

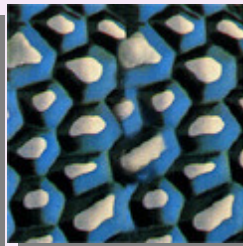
**INDENT**  
Delivery approx. 12 - 14 weeks  
*For the full indent range, please go to [www.rimexmetals.com](http://www.rimexmetals.com) and click on "ColourTex"*



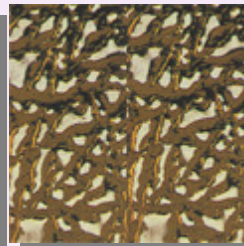
**Poppy**



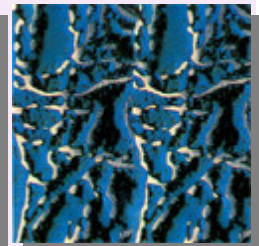
**Patio**



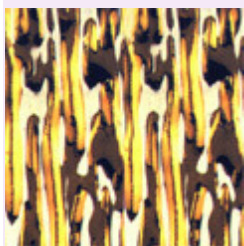
**Pebble**



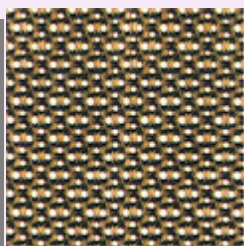
**Pantheon**



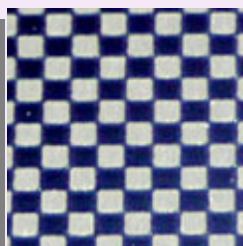
**Pampas**



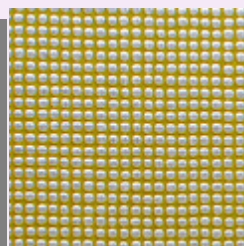
**Pegasus**



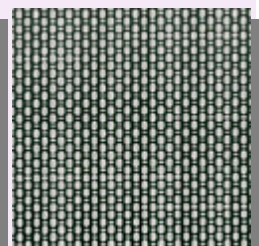
**Paladin**



**Checks**



**Canvas H/L**



**Linen H/L**

## COLOURTEX™ STAINLESS STEEL

### AUSTRALIAN MADE

**Patterns:**

Pippin, Prism, Pagoda, Pearl, Pinstripe, 5WL, 6WL, QP76

**Colours available:** Black, Blue, Bronze, Charcoal, Gold, Green, Purple

**Sheet sizes:**

2500 x 1250 x 0.6mm

2500 x 1250 x 0.9mm

*Pearl pattern available in 1000mm width only*

### EX STOCK

**Patterns:** Pyramid

**Colours available:** Blue, Charcoal

**Sheet size:**

2500 x 1250 x 0.6mm

### INDENT

**Patterns:**

Poppy, Pyramid, Patio, Pebble, Pantheon, Pampas, Pegasus, Paladin, Checks, Linen H/L, Canvas H/L

**Colours available:** Black, Blue, Bronze, Champagne, Charcoal, Gold, Green, Purple, Rosy Gold

**Lengths:** Any length up to 3000mm  
(standard lengths are 2500mm & 3000mm)

**Widths:** 1000mm & 1250mm (Patio, Pyramid & Pebble - 1000mm only)

**Thicknesses:** 0.6mm, 0.8mm, 1.0mm, 1.2mm, 1.5mm, 2.0mm

**N.B.** Material can be freighted economically from the UK with other stock orders, so there are no minimum requirements except time.