

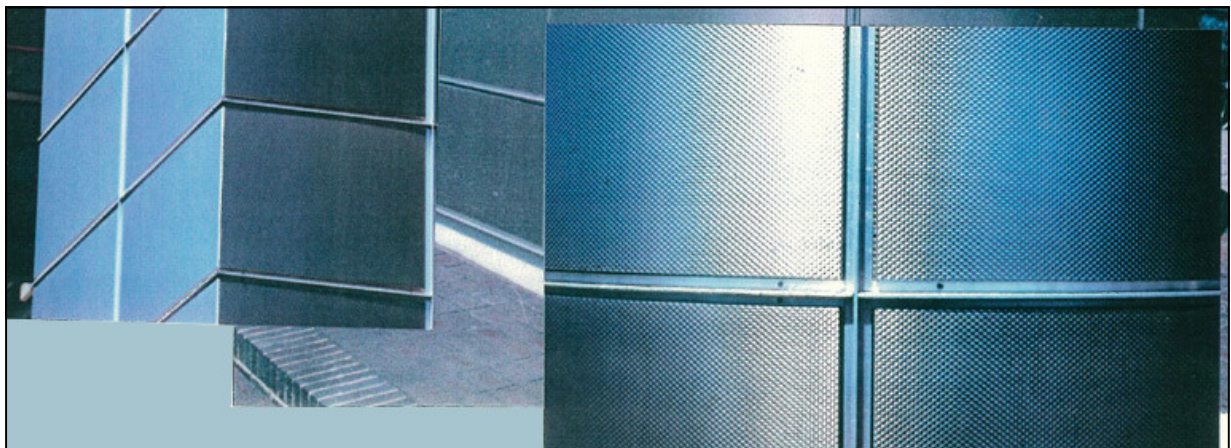
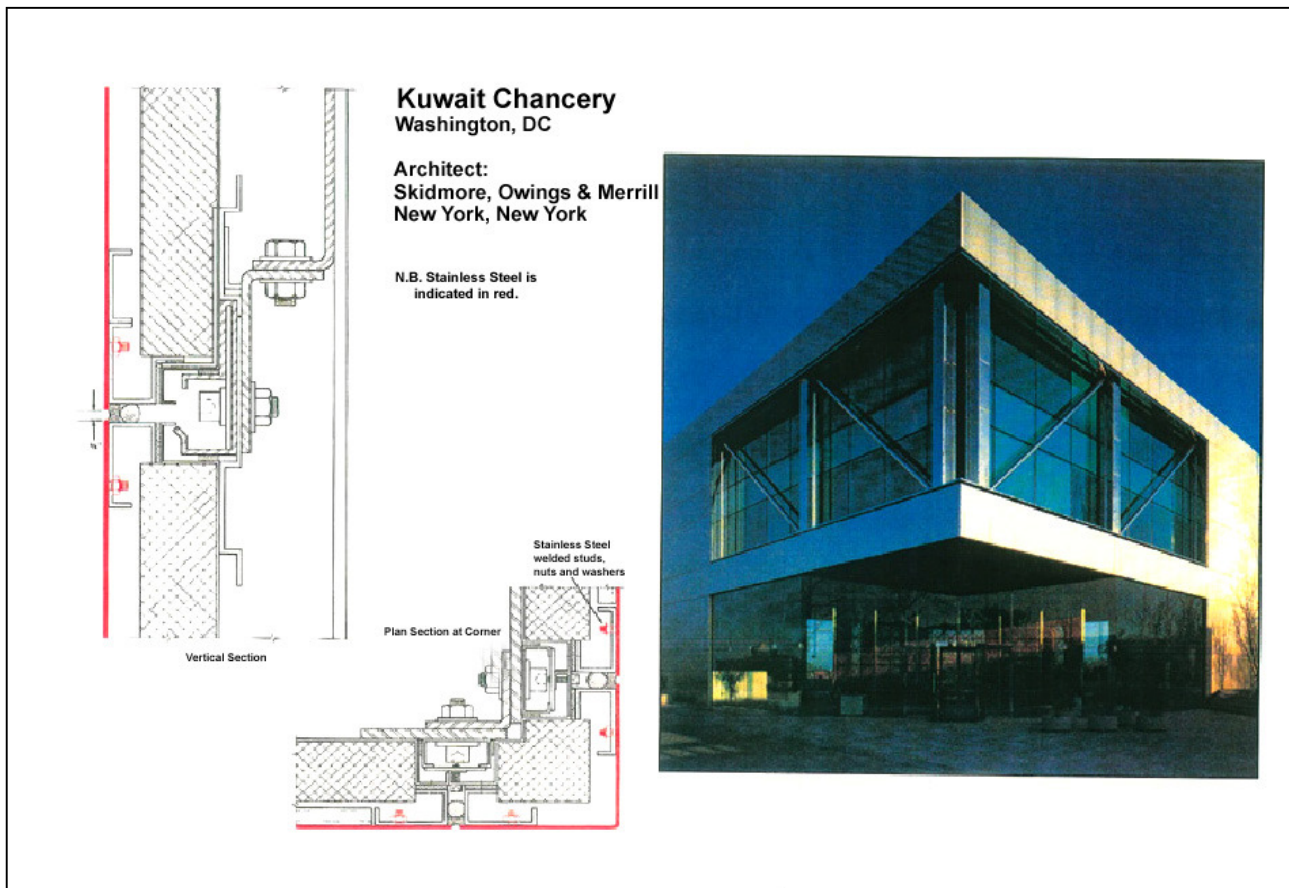
ARCHITECTURAL FIXING & JOINS

This leaflet displays examples of architectural fixing and joins.

GENERAL INFORMATION

- ◆ Rimex products can be fixed using glue/screws to MDF board.
- ◆ We recommend using a thicker material if the Rimex finish is to be fixed to a frame.
- ◆ Avoid thin gauges if sticking material down flat to a flat surface.

EXAMPLES OF ARCHITECTURAL JOINS



EXAMPLES OF COMMON FIXING METHODS

VARIOUS ARCHITECTURAL JOINTS

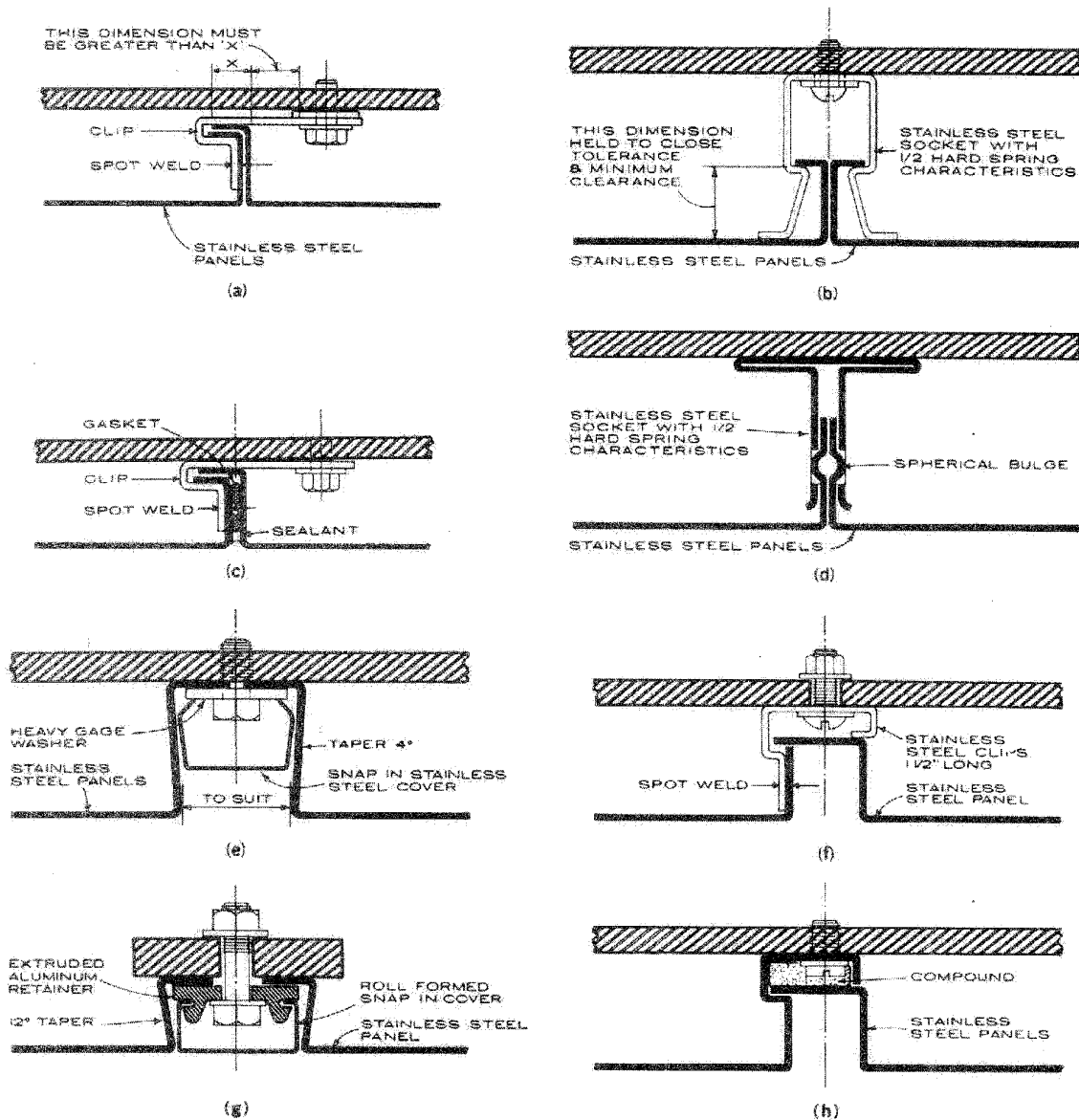


Figure 5. Typical architectural joints. (a) Standard joint; (b) typical snap-in panel joint; (c) interlocking flanged joints; (d) typical removable snap-in panel joint; (e) recessed panel joint; (f) interlocking recessed panel joint; (g) recessed panel joint with flush snap-in cover; (h) interlocking recessed panel joint with sealant.